

A Place to be, or not to be...

CPTED in Land Development

Nick Aiken

Urban Planner, Urban Designer



He waka eke noa
Let's do this together

Me...

- TĒNĀ TĀTOU KATOĀ
- KO TARANAKI TŌKU MAUNGA
- KO HOKITIKA TŌKU AWA
- KO AHURIRI TE KĀINGA
- NŌ DUNEDIN AHAU
- KO AIKEN TŌKU WHĀNAU
- KO NICK TŌKU INGOA



CPTED Recap – Seven Qualities of Safer Spaces

1. Access:	<p>Safe movement and connections</p> <ul style="list-style-type: none">• Places with well-defined routes, spaces and entrances that provide for convenient and safe movement without compromising security.
2. Surveillance and sightlines:	<p>See and be seen</p> <ul style="list-style-type: none">• Places where all publicly accessible spaces are overlooked, and clear sightlines and good lighting provide maximum visibility.
3. Layout	<p>Clear and logical orientation</p> <ul style="list-style-type: none">• Places laid out to discourage crime, enhance the perception of safety and help orientation and way-finding.
4. Activity mix	<p>Eyes on the street</p> <ul style="list-style-type: none">• Places where the level of human activity is appropriate to the location and creates reduced risk of crime and a sense of safety at all times by promoting a compatible mix of uses and increased use of public spaces.
5. Sense of Ownership	<p>Showing a space is cared for</p> <ul style="list-style-type: none">• Places that promote a sense of ownership, respect, territorial responsibility and community.
6. Quality environments	<p>Well designed, managed and maintained environments</p> <ul style="list-style-type: none">• Places that provide a quality environment and are designed with management and maintenance in mind to discourage crime and promote community safety in the present and the future.
7. Physical protection	<p>Using active security measures</p> <ul style="list-style-type: none">• Places that include necessary, well-designed security features and elements



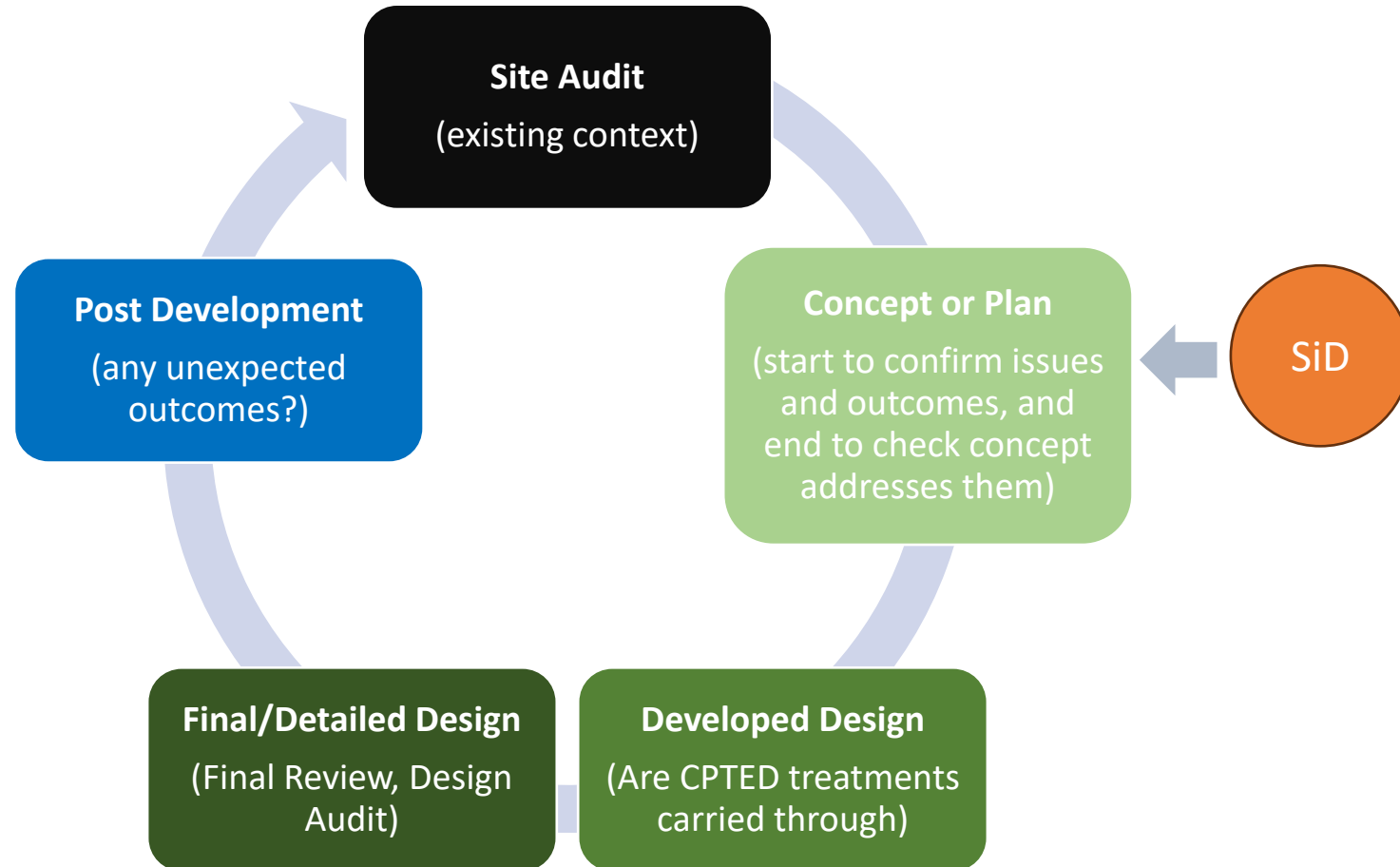
Misconceptions

- CPTED is not about getting rid of plants, creating barren empty spaces, or creating a fortress.
- CPTED is not just for transport infrastructure, shopping centres, or playgrounds, it is also for residential streets and subdivisions.
- CPTED is not about preventing or restricting activity, it is about enabling desired and legitimate activity. It's about places for people.



The basics of CPTED in Design/Land Development

- Fairly simple, 'common sense'... but does require CPTED training



Based on... Cultural Heritage? Recreational Opportunity, Connectivity, Amenity, ...**CPTED**?

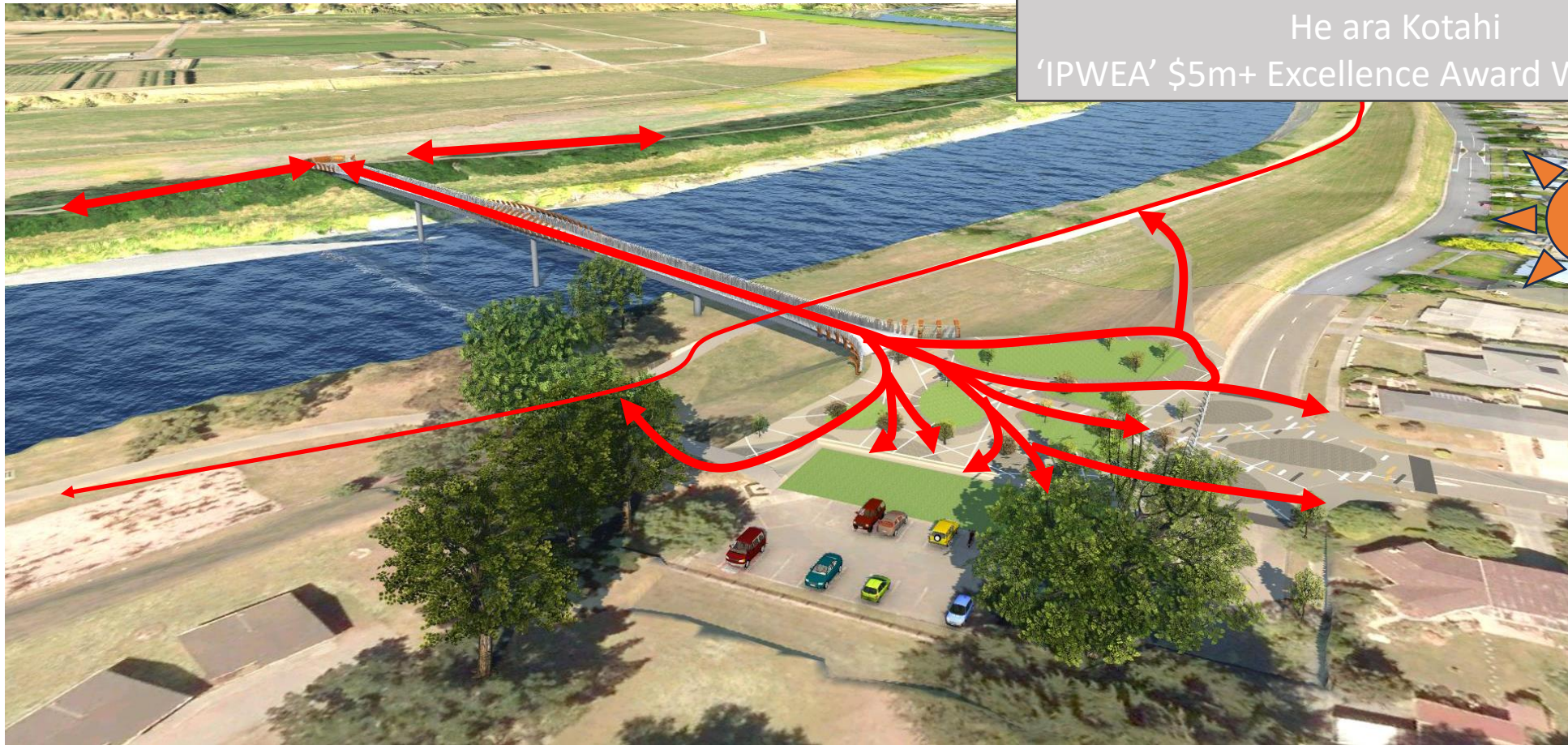


He waka eke noa
Let's do this together



Designing in – Access and Layout

- ‘Movement Framework’ – Comfort, Choice, Legibility

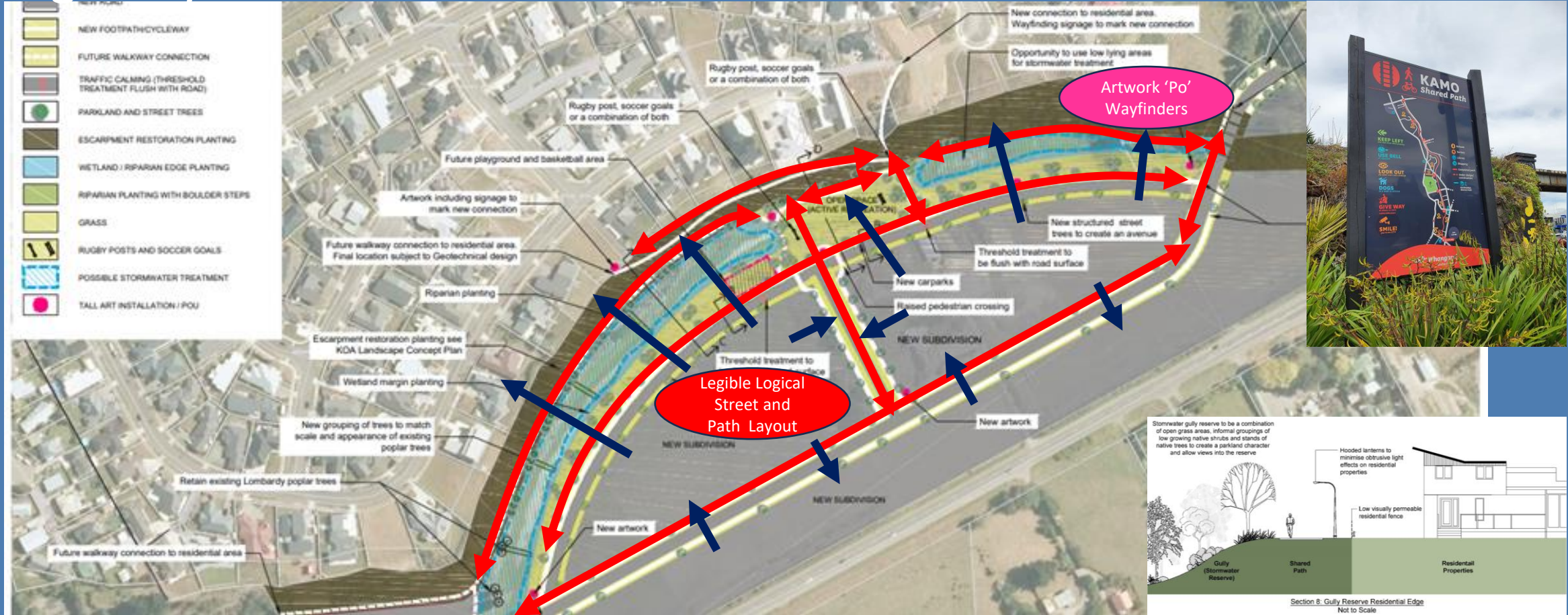


He ara Kotahi
‘IPWEA’ \$5m+ Excellence Award Winner 2020



Masterplanning Access and Layout

- 'Developing a Movement Framework' for Comfort, Choice, Legibility

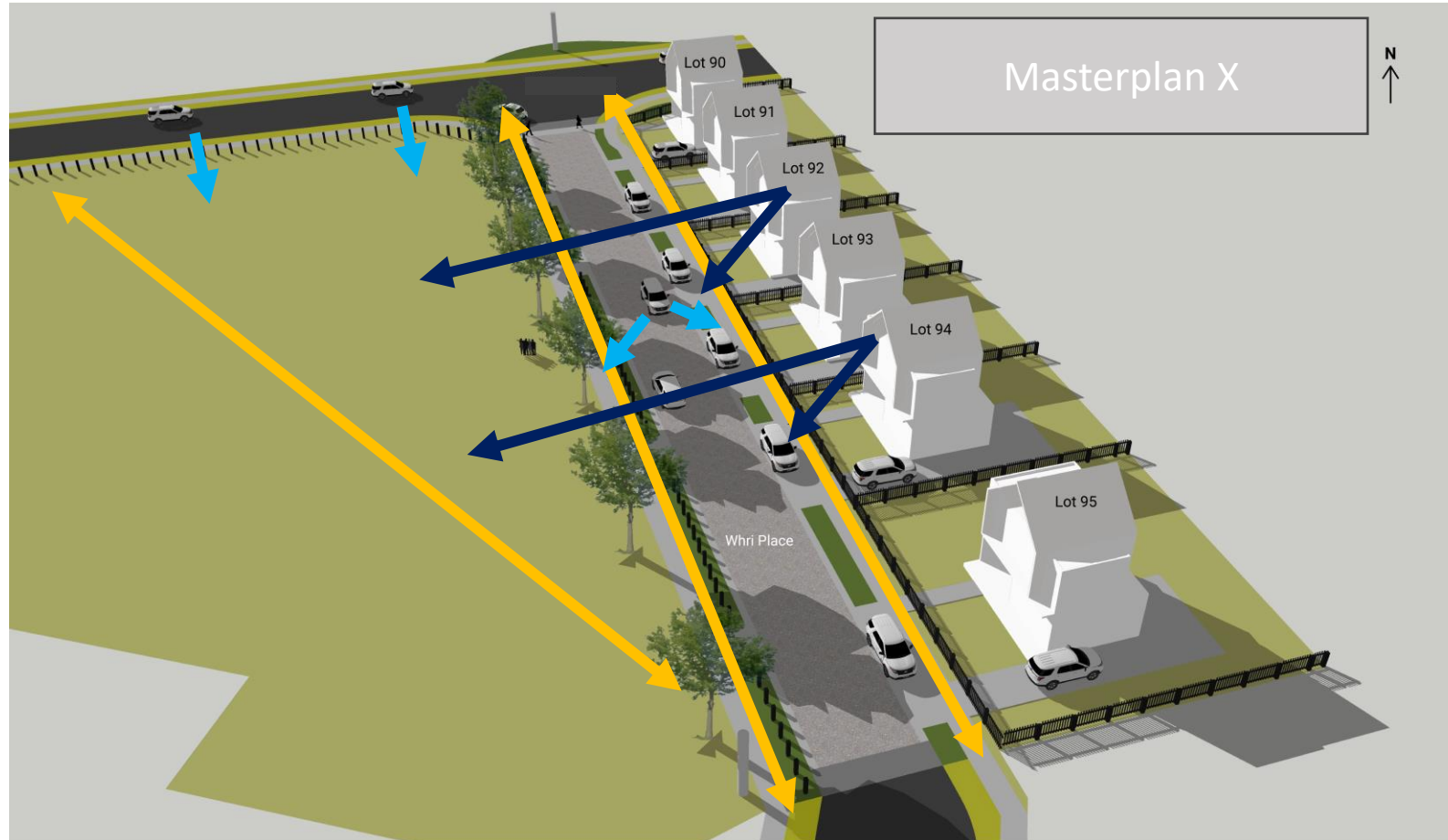


He waka eke noa
Let's do this together



Designing in – Surveillance and Sightlines

- See and be seen



Masterplanning Activity Mix – TC

- Compatible mix of uses



He waka eke noa
Let's do this together



Activity Mix - Residential

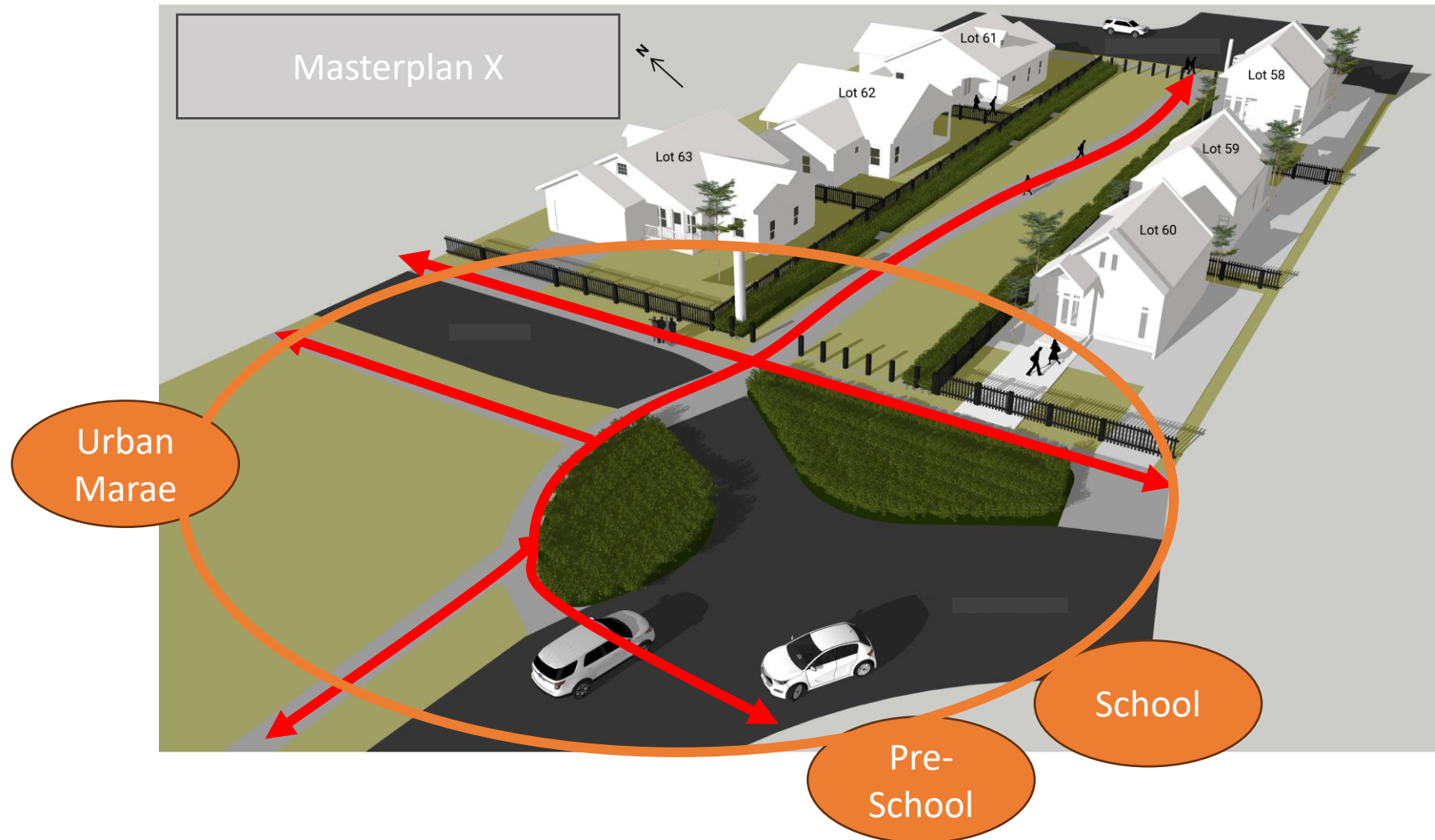


Carmichael Reserve, Bethlehem

He waka eke noa
Let's do this together



Designing in - Activity Mix, Residential

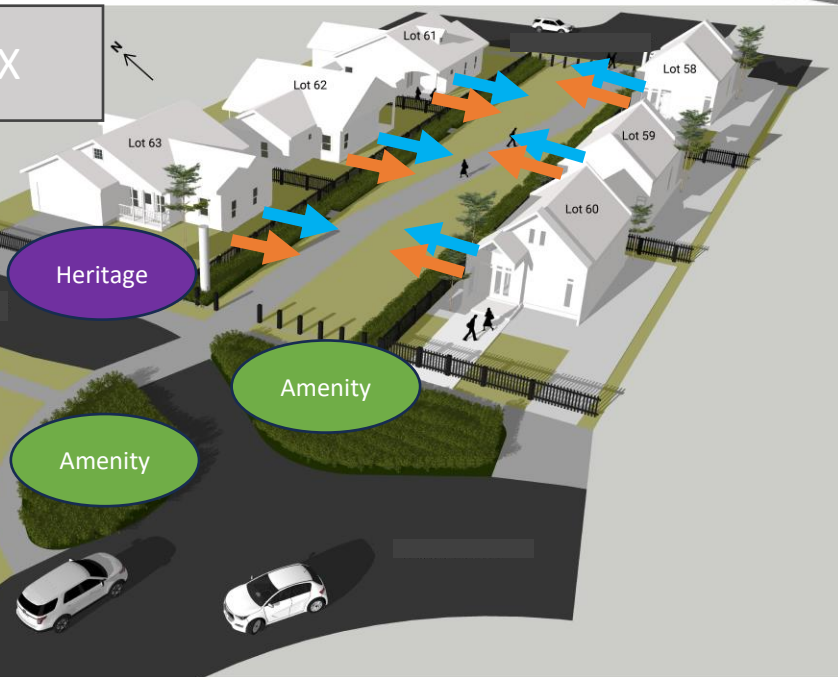


Designing in Sense of Ownership (respect, community)

Masterplan X



Masterplan X



He waka eke noa
Let's do this together

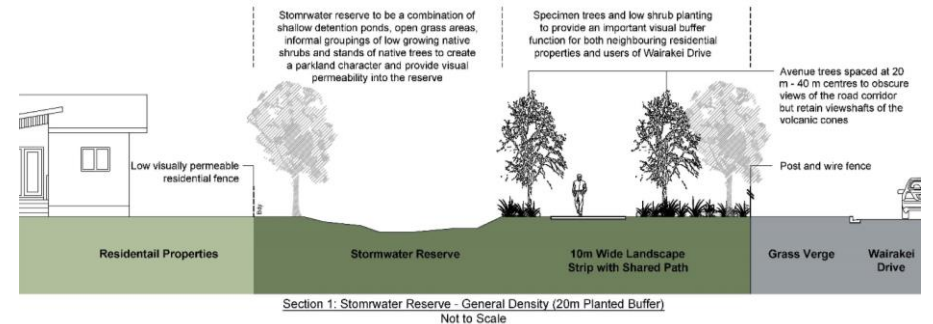
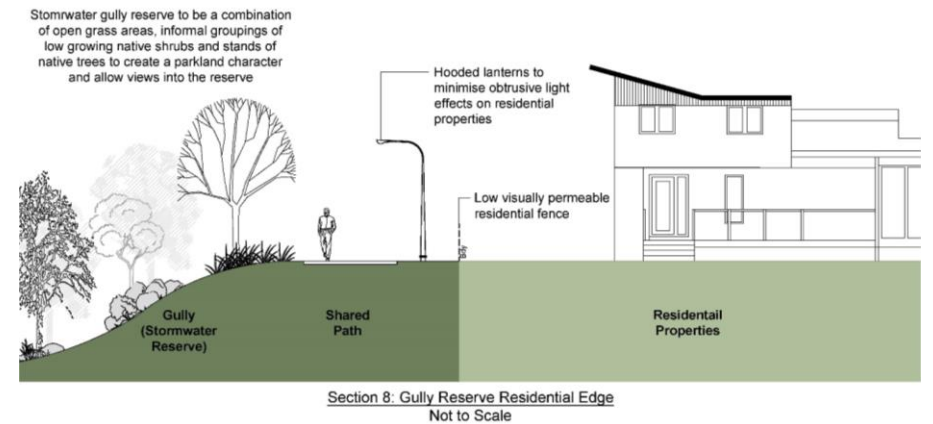
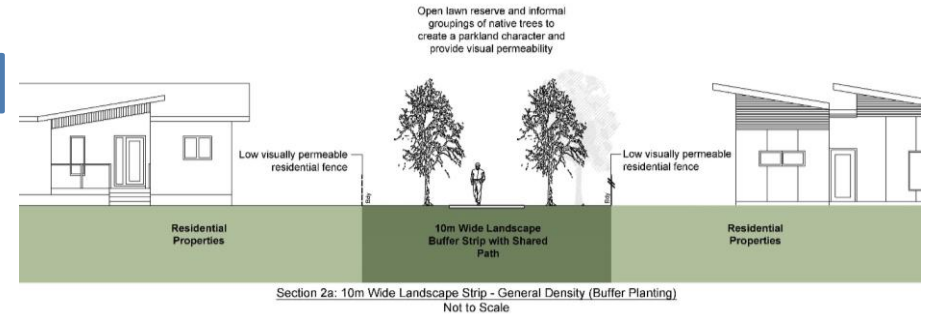
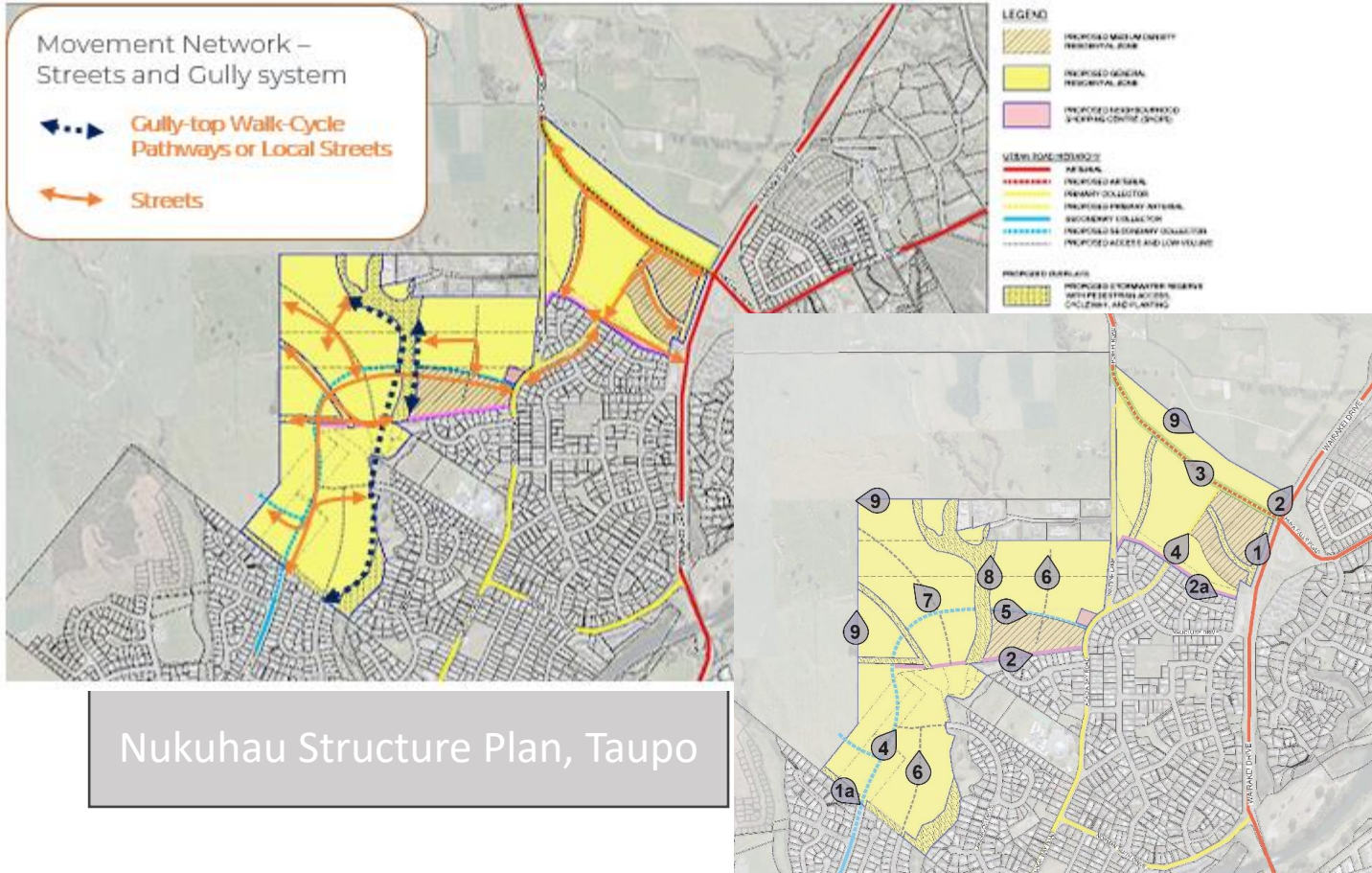




Wairakei Stream, Papamoa

Masterplanning – Quality Environments

- Well designed, managed and maintained





Wairakei Stream, Papamoa

He waka eke noa
Let's do this together



Designing in Target Hardening

Kuaka Interchange, Napier



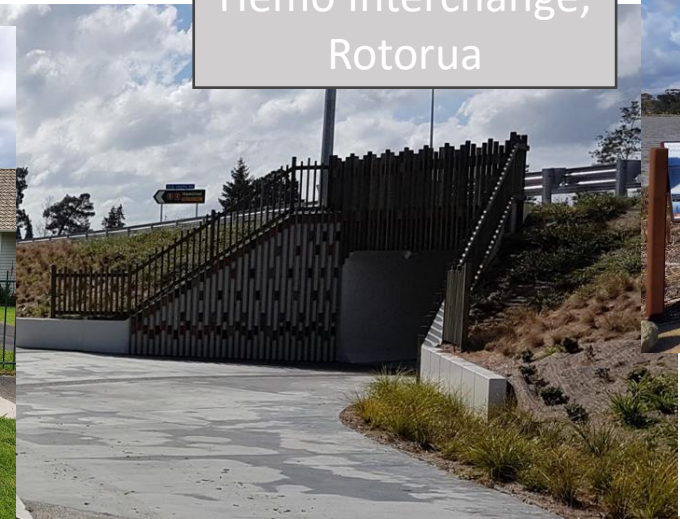
Mangawhai, Northland



Kamo Whangarei



Hemo Interchange, Rotorua



He ara Kotahi, P North



He waka eke noa
Let's do this together



A Place to Be.....Or not to be



Thanks

He waka eke noa
Let's do this together

