



ROAD INFRASTRUCTURE
MANAGEMENT FORUM

Our Carbon Equation

Achieving Community & Climate Outcomes Through Maintenance & Low-Cost Interventions

Peter Standring | Waka Kotahi

Erik Teekman | Waka Kotahi



in association with

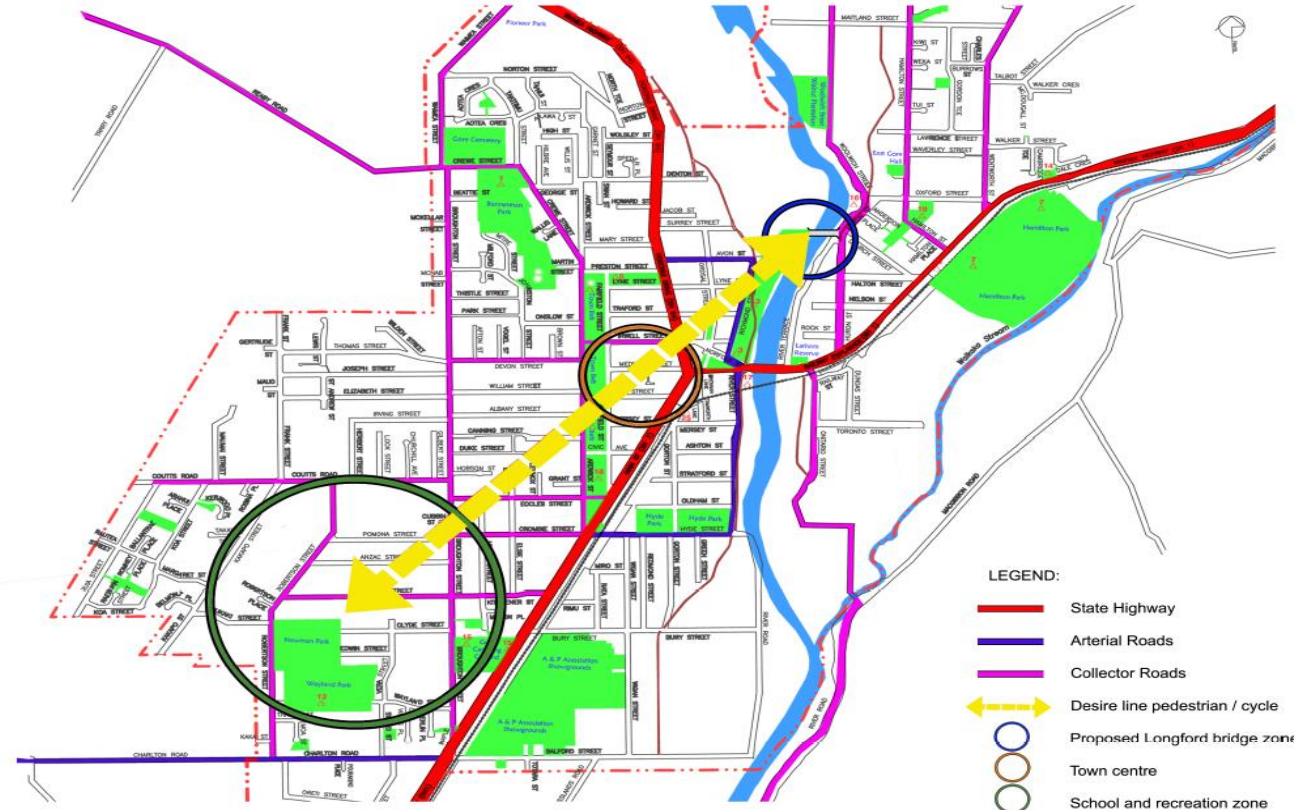


Background Context – Gore



Our Carbon Equation

Background Context – Gore



- LEGEND:**
- State Highway
 - Arterial Roads
 - Collector Roads
 - - - Desire line pedestrian / cycle
 - Proposed Longford bridge zone
 - Town centre
 - School and recreation zone

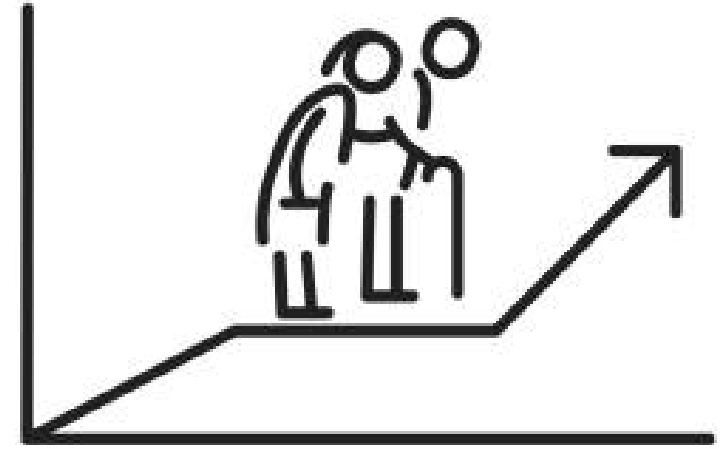


Gore Vehicle hierarchy V's Pedestrian & cycle desire line.



Job No. 2084
Plan: MCP01
Client: GDC
Date: Oct 2020

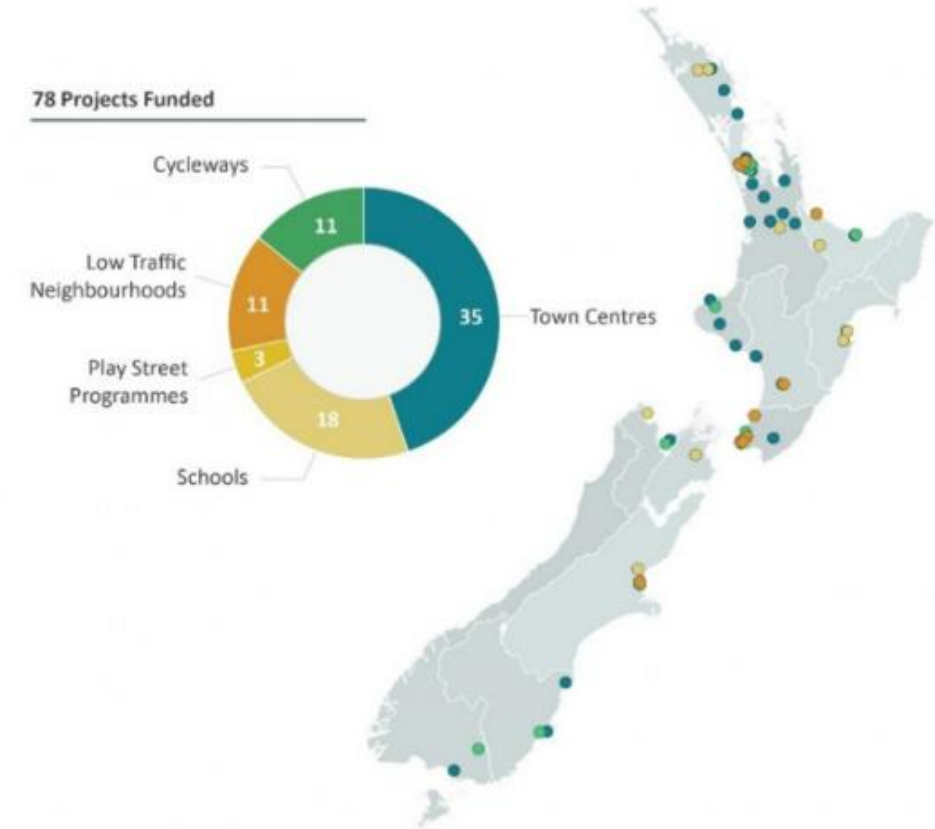
Background Context – Gore



Our Carbon Equation

Innovating Streets Programme

- Waka Kotahi vision for 2050 is a low-carbon, safe and healthy transport system
- Towns and cities are reshaped to reduce people's reliance on cars and support active, healthy and shared transport choices.
- Using tools such as Tactical Urbanism to rapidly reallocate street space to enabled speed up project implementation.



Funded projects in the Innovating Streets for People programme

STREETS ALIVE - GOALS

STREETS ALIVE

- **Vibrant Public Realm**
- **People-Friendly Spaces**
- **Safer Streets**
- **Supporting Active Transport Modes**
- **Destinations of Pride & Preference**

Our Carbon Equation

What we did



Influence traffic behaviours and transport asset use irrespective of mode

Our Carbon Equation

What we did

Google Earth



Our Carbon Equation

What we did



Our Carbon Equation

What we did



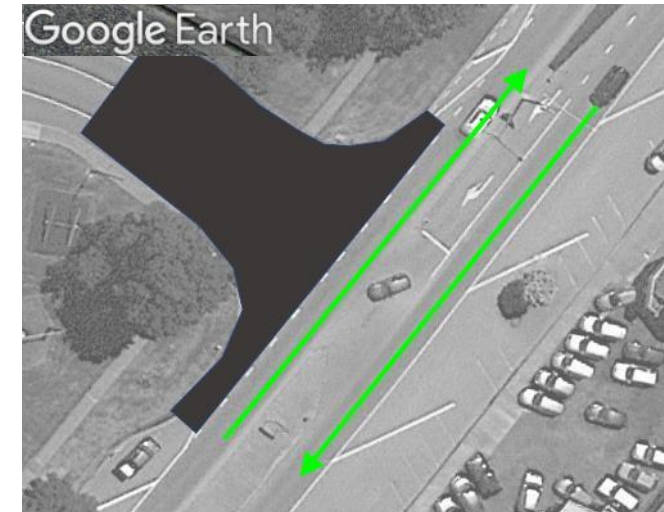
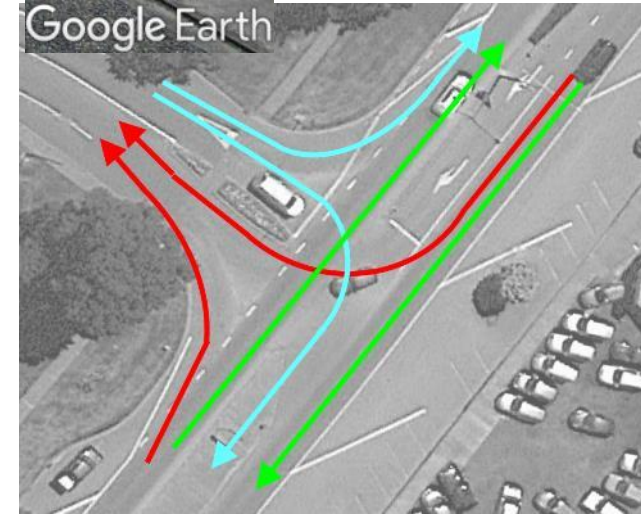
Our Carbon Equation

What we did



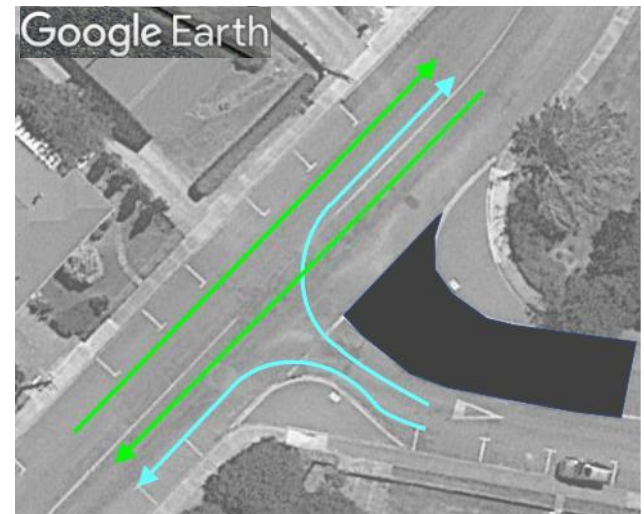
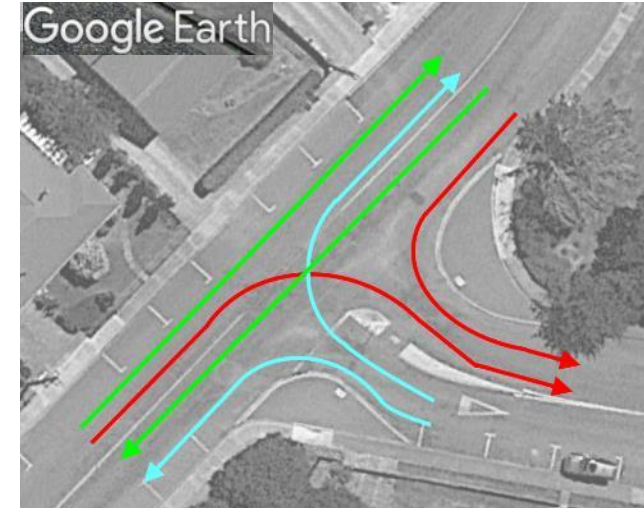
Our Carbon Equation

What we did



Our Carbon Equation

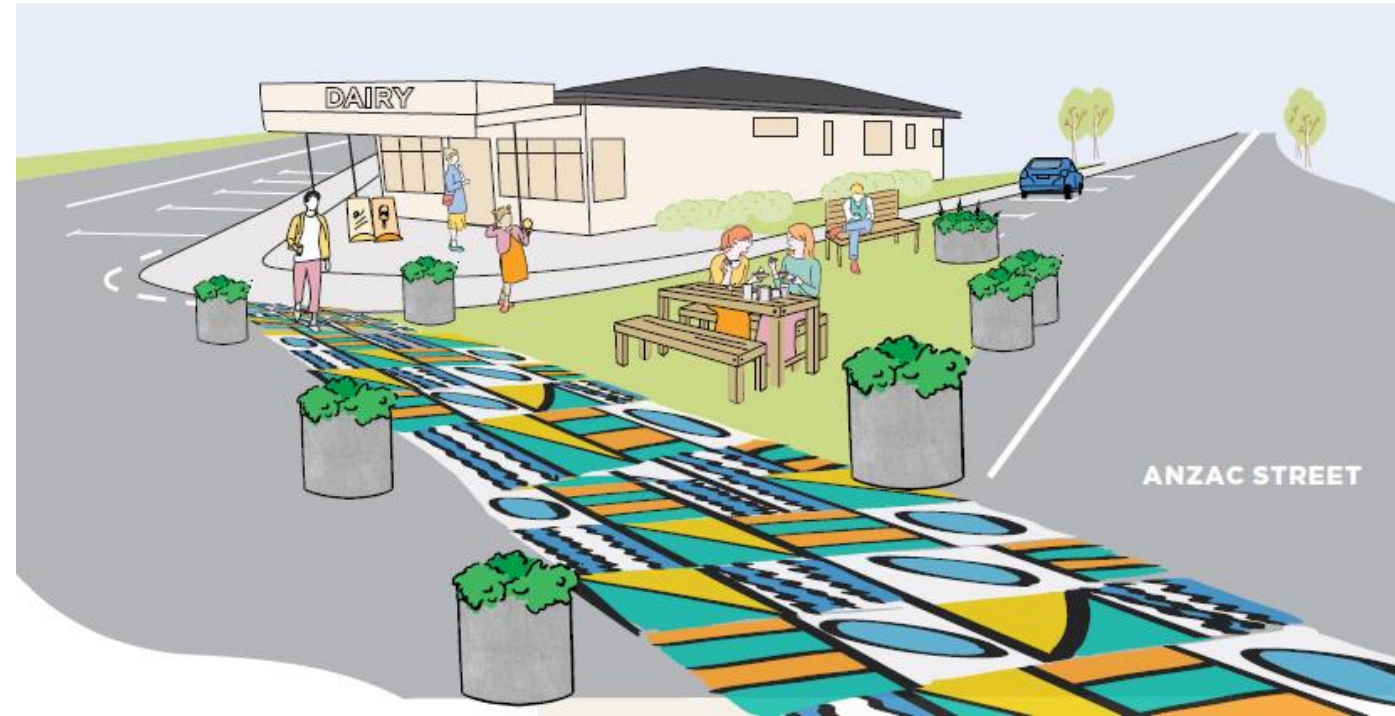
What we did



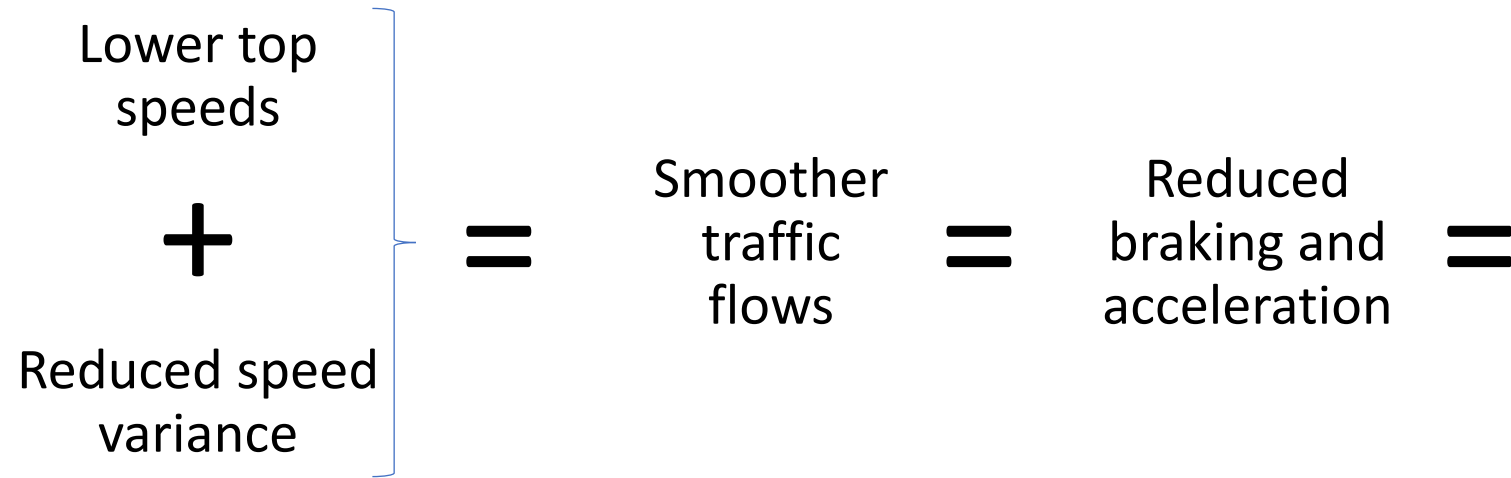
Our Carbon Equation

Results - Caveats

- Traffic Seasonality
- Incompleteness (bias) & sample sizes
- Different counters
- Indicative vs exact



Traffic Characteristics – Carbon Equation



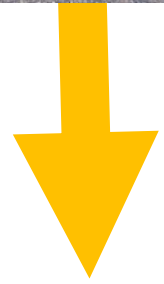
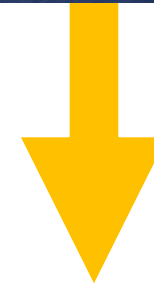
Our Carbon Equation

Traffic Redistribution – Carbon Equation

$\Sigma \Delta$

Street/Road Classification/Criteria
PRIMARY COLLECTOR
SECONDARY COLLECTOR
ACCESS
LOW VOLUME

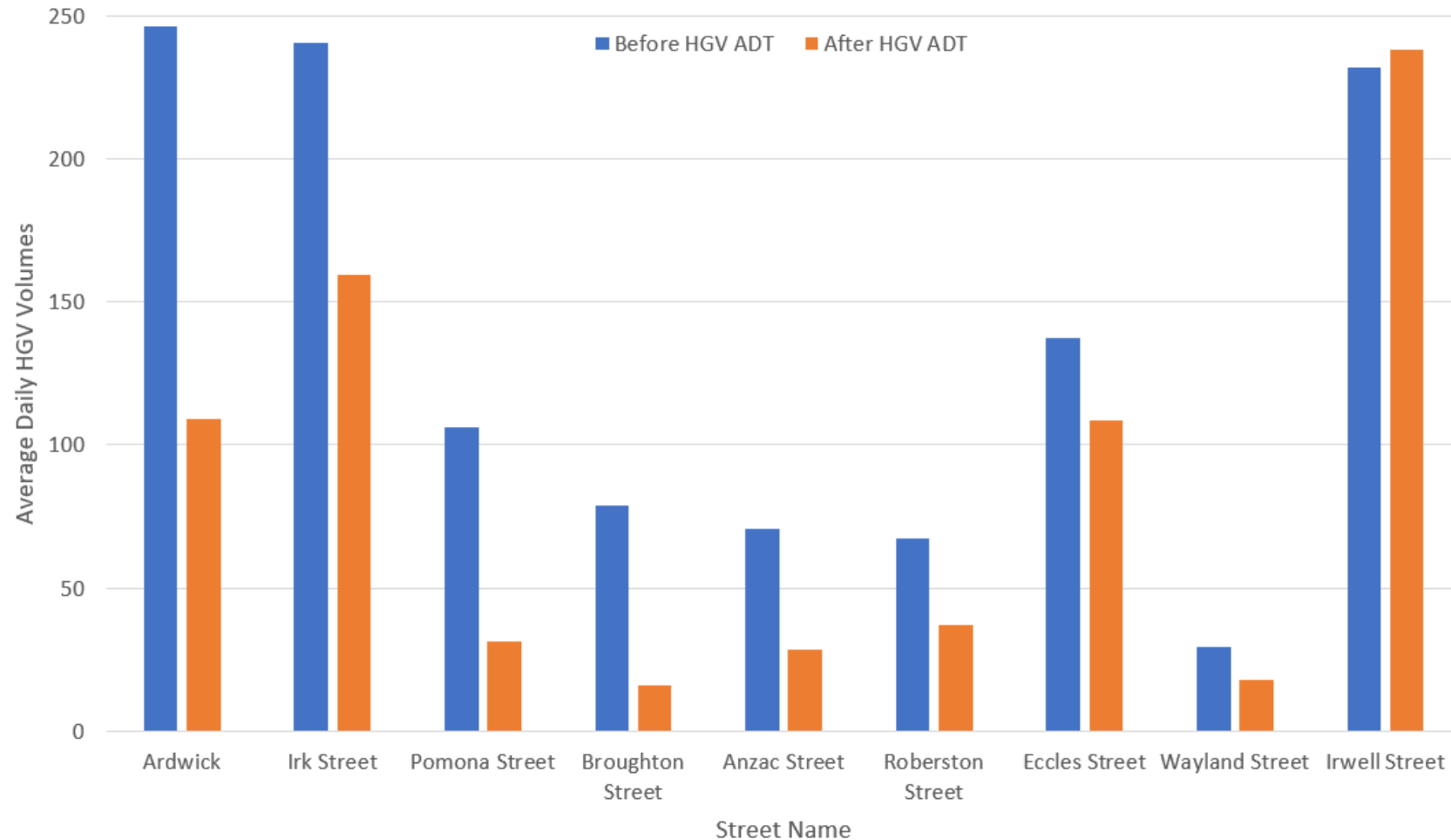
=



Our Carbon Equation

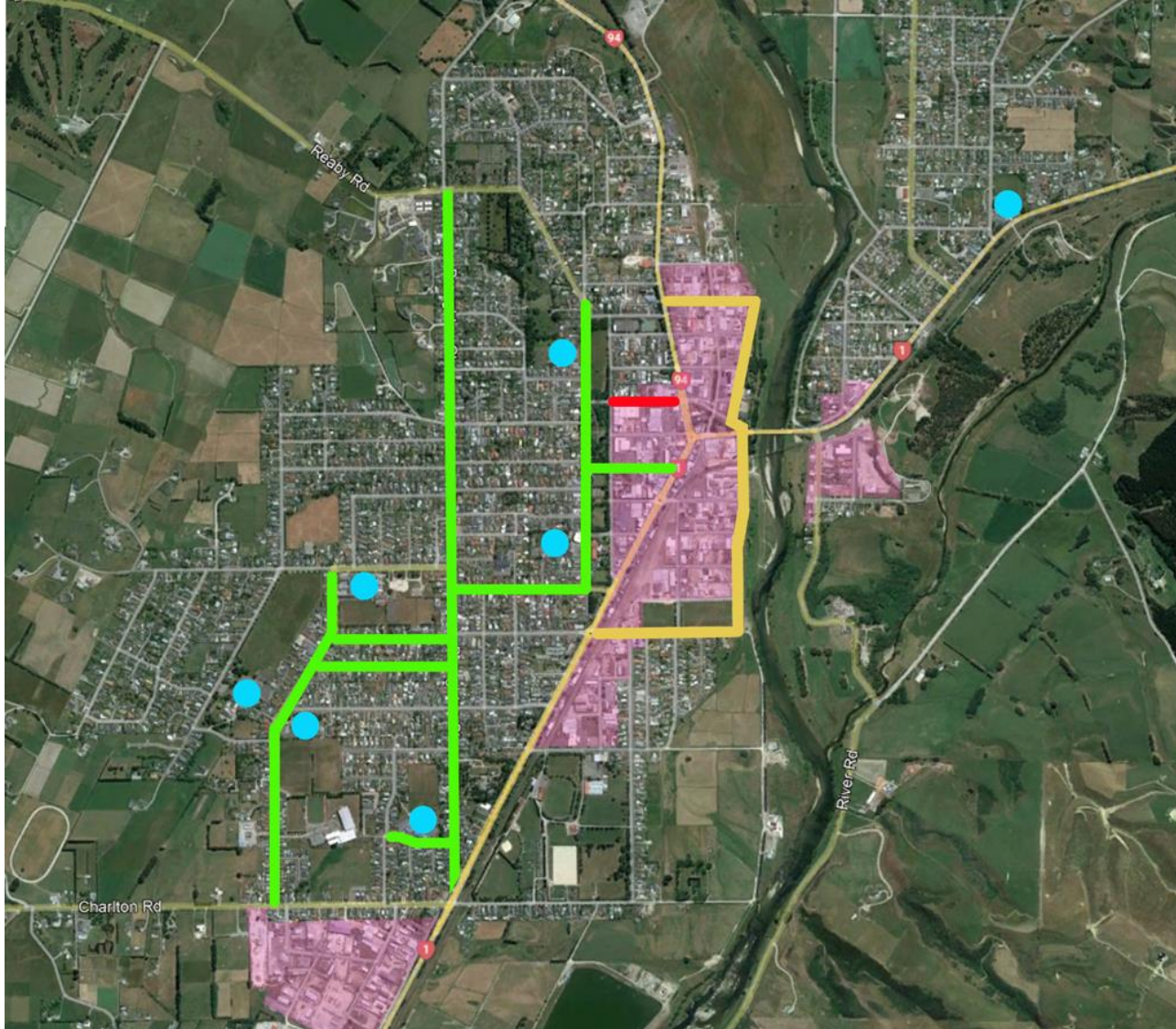
Results – HGV Traffic Redistribution






Change in Heavy Vehicle Traffic Flows on Local Roads



Our Carbon Equation

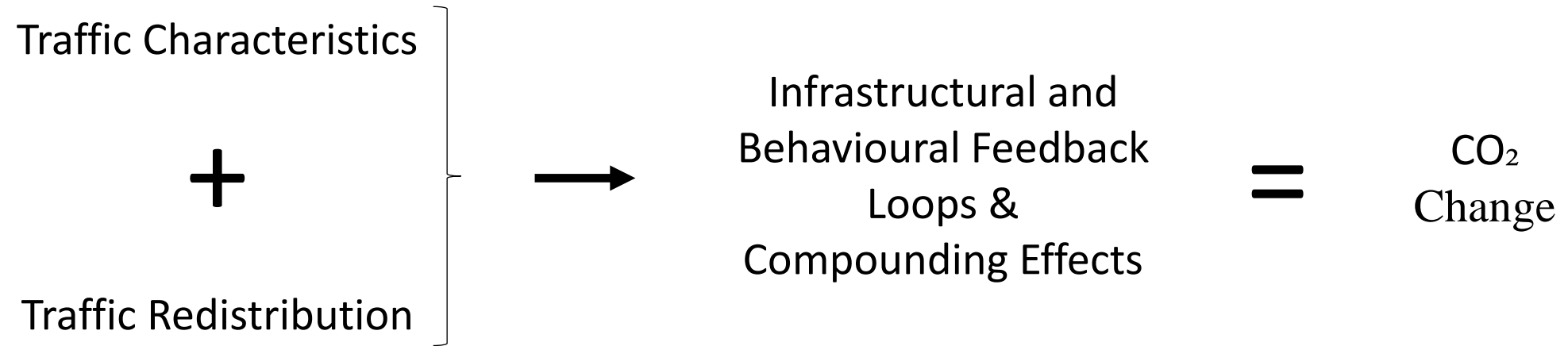
Results – HGV Traffic Redistribution



-  CBD & Industry
-  HGV Count Increase
-  HGV Count Decrease
-  Heavy traffic bypass
-  School

Our Carbon Equation

Network Outcomes – Carbon Equation



Our Carbon Equation

Summary

- Technical solution exists
- “People want change, but they don’t want to change”
- Technical and social challenge intertwined



Our Carbon Equation