

Richmond West: Development and Projects

February 2020

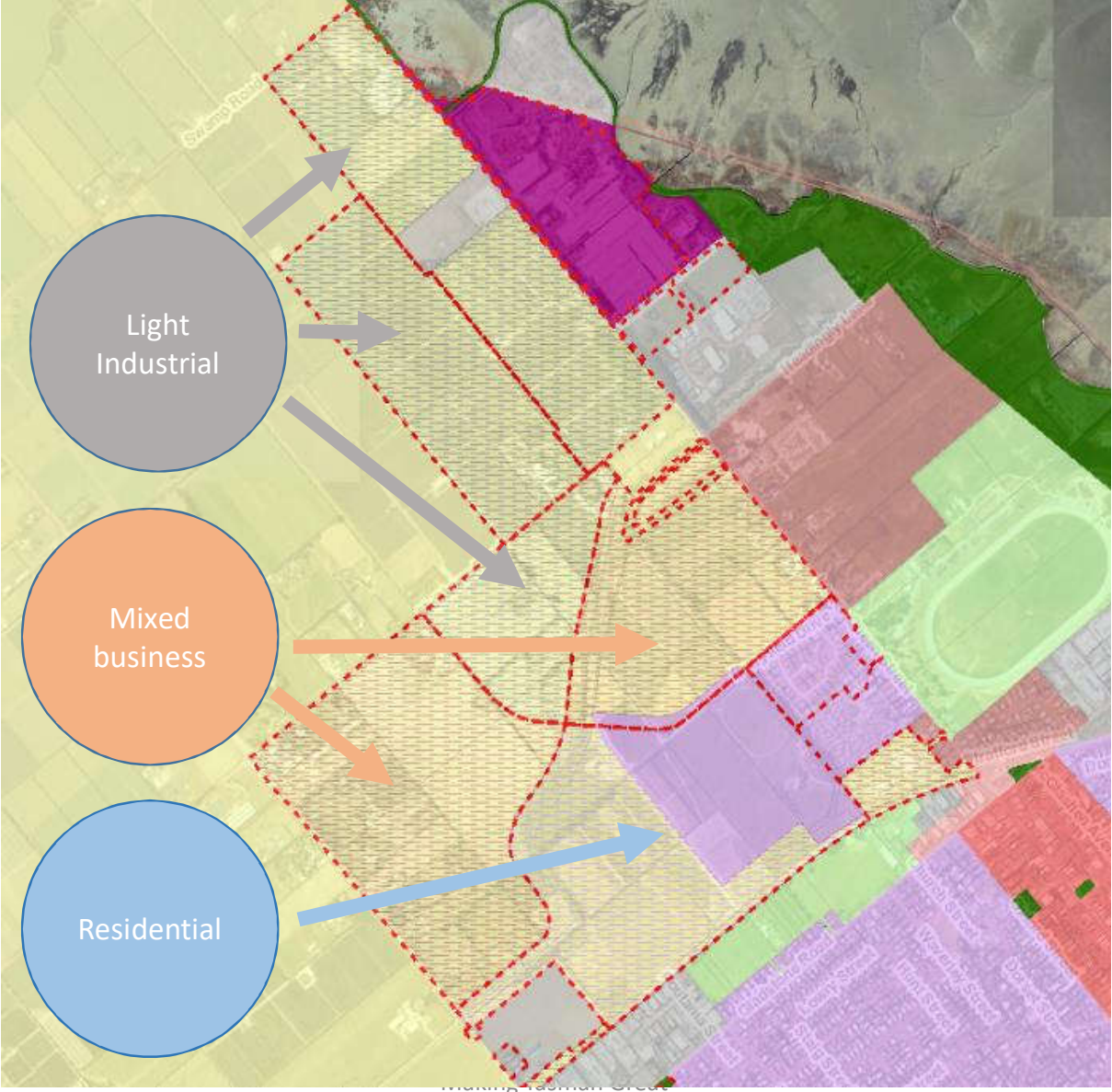
"Making Tasman Great"



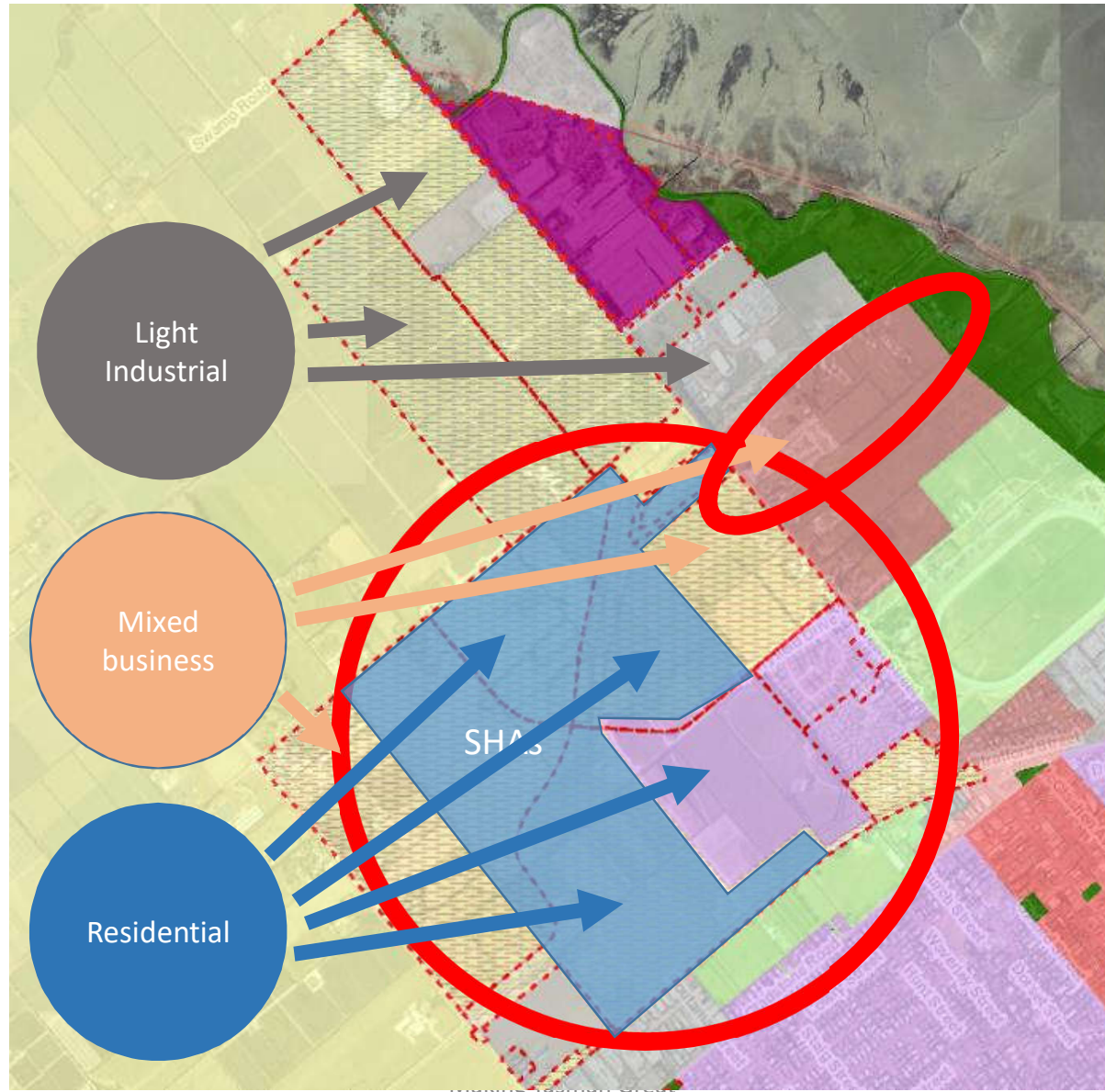
Richmond West



"Making Tasman Great"



Richmond West - zoning

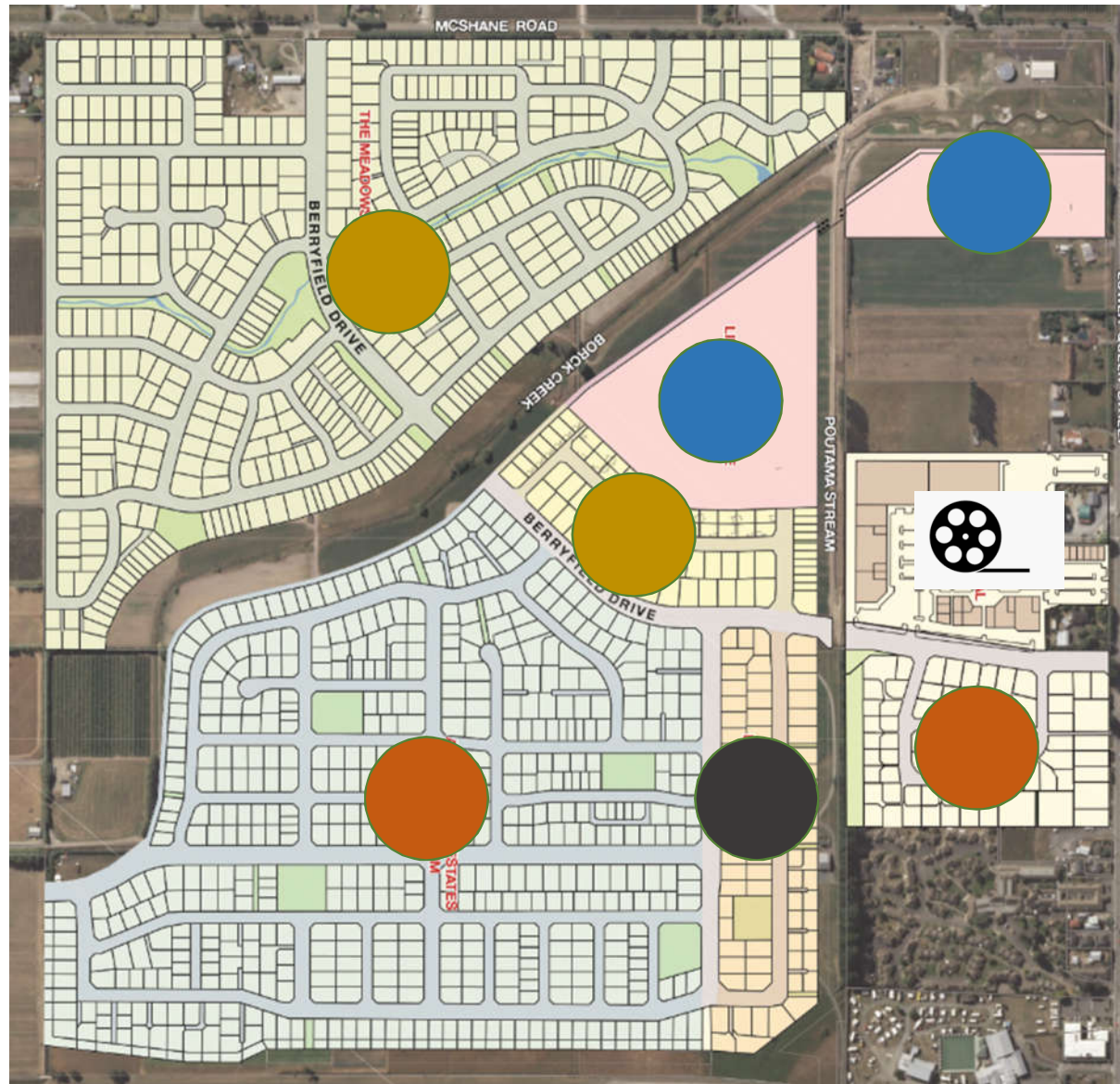


RWDL

Arvida

Projects & Ventures

Wensley Rd D'ments



Key Stats

- 1,450 Dwellings
- 3,500 people
- 550,000 m³ water per annum
- 15,000 traffic movements per day
- \$36m in DC revenue
- \$4.5m in rates per annum
- 1 cinema

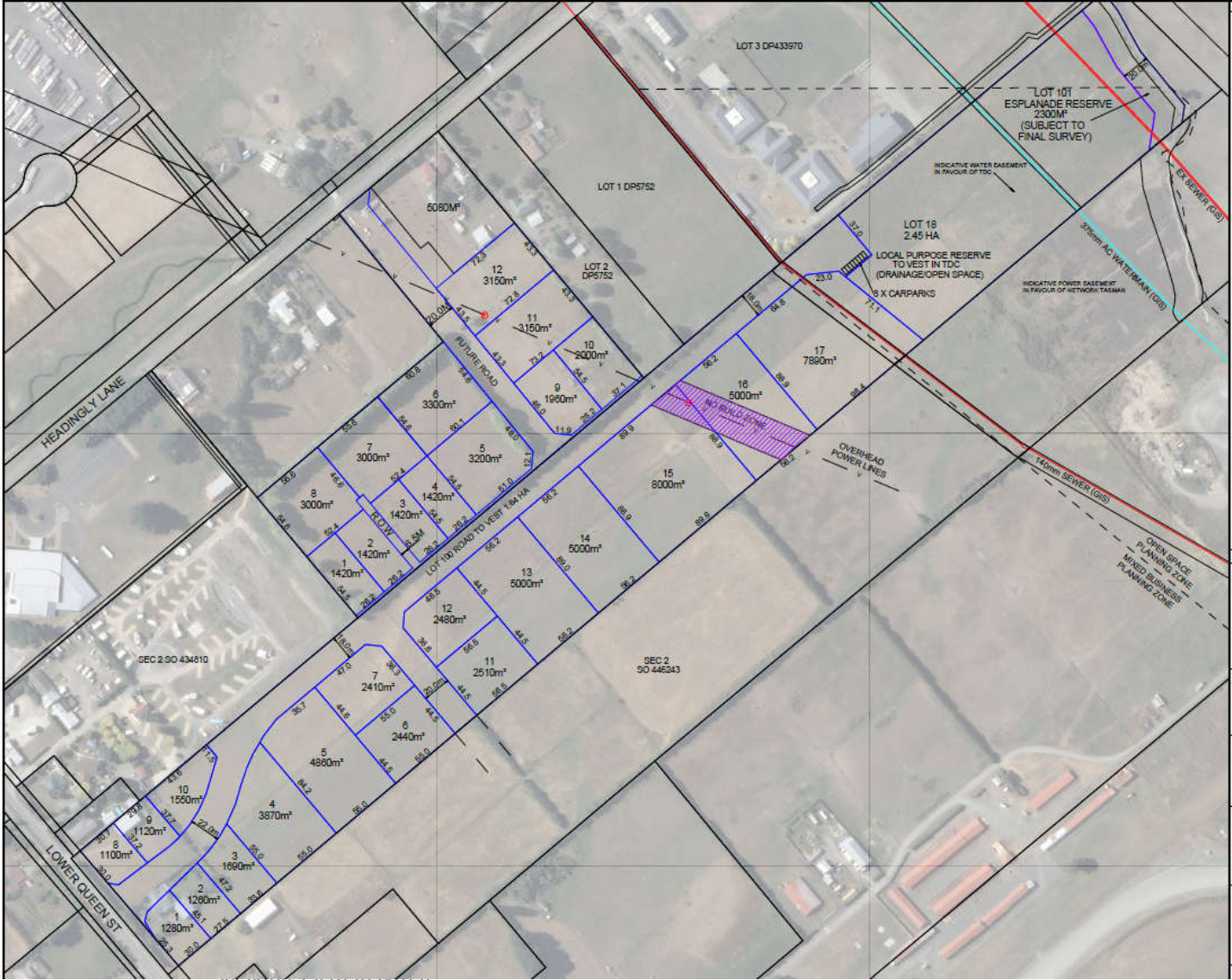
Richmond
West
Industrial:

Comans
development

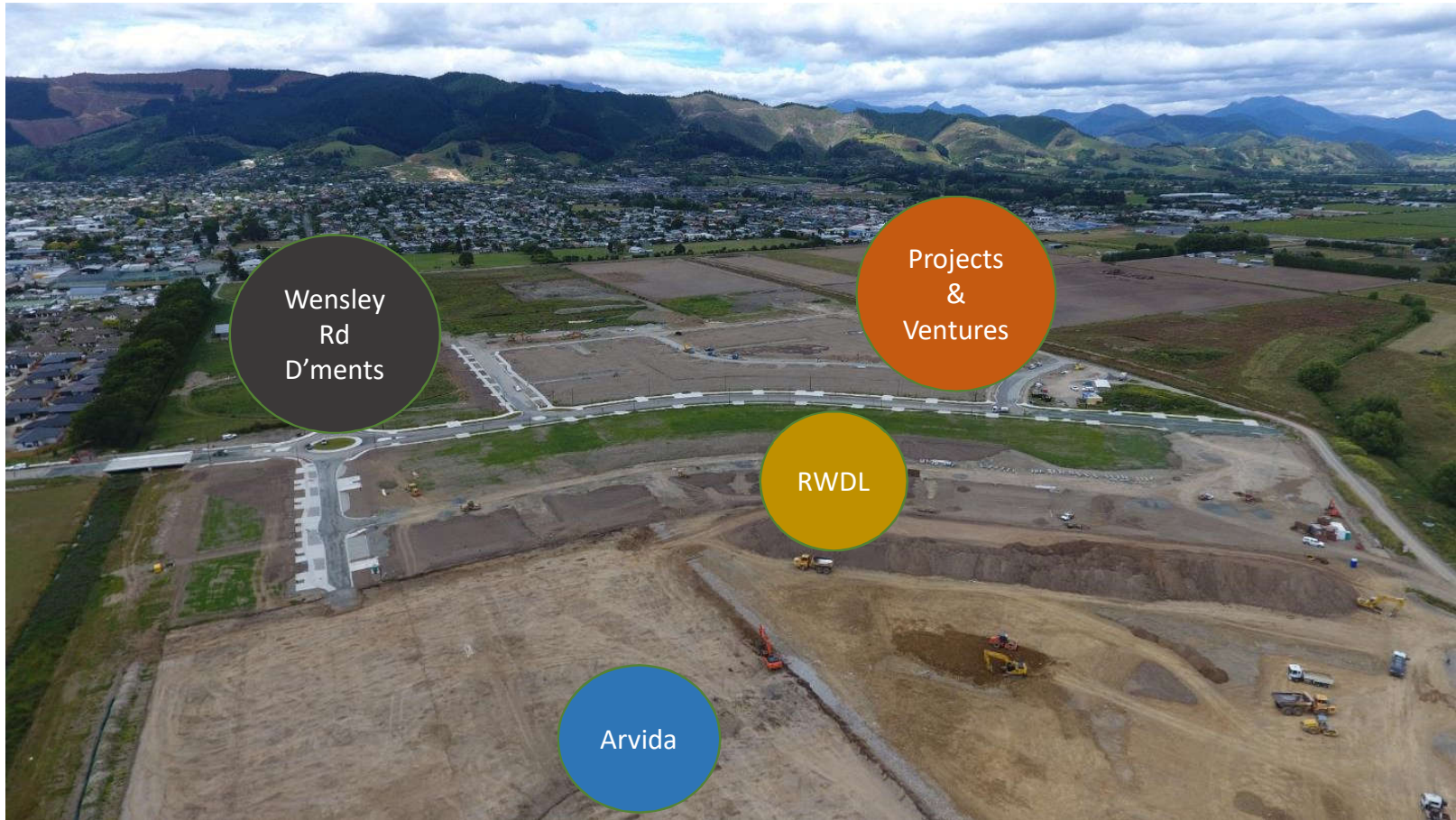


"Making Tasman Great"

- Coman development

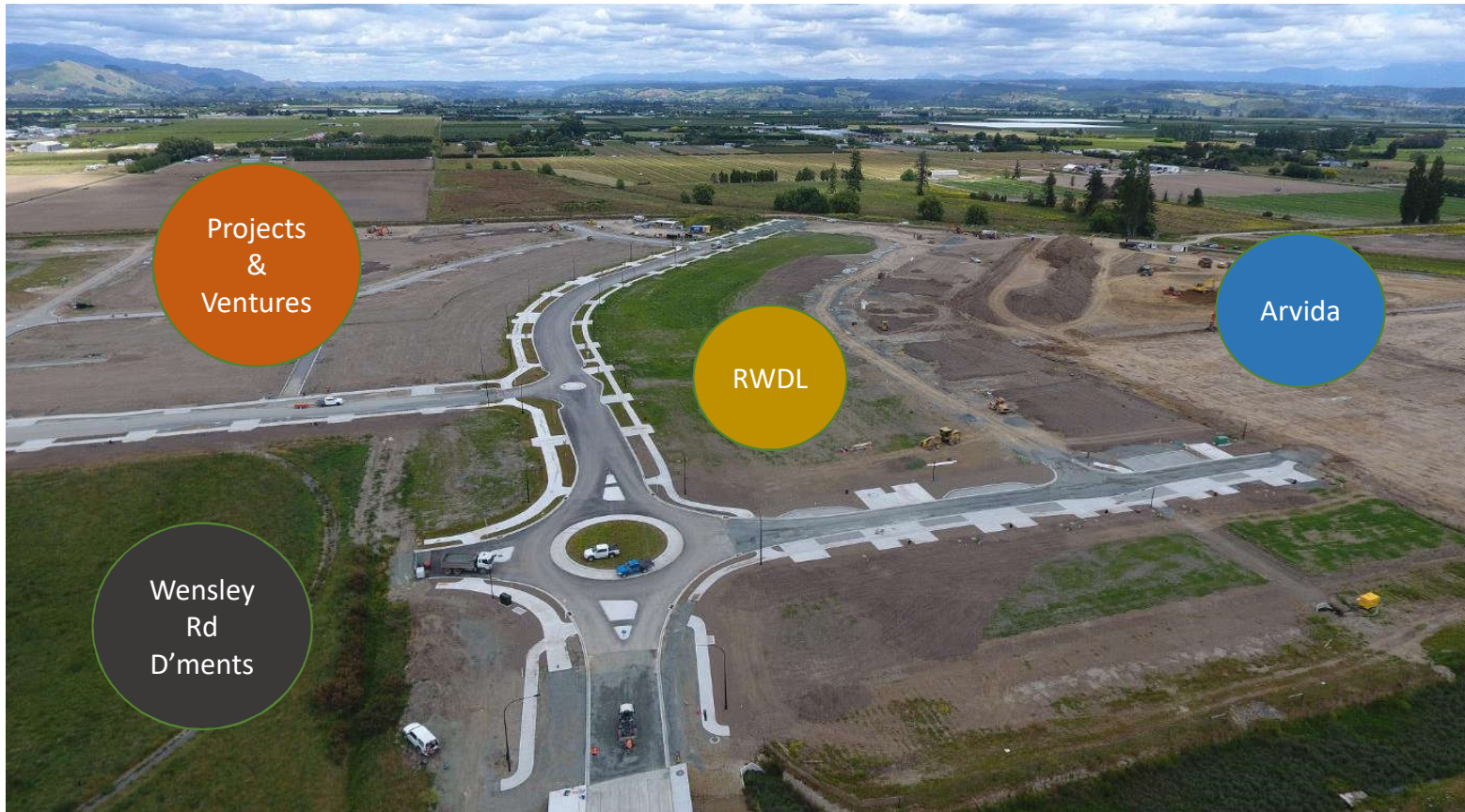


Richmond West



Making Tasman Great

Richmond West



Making Tasman Great

Richmond West – across the creek



Richmond West



Richmond West



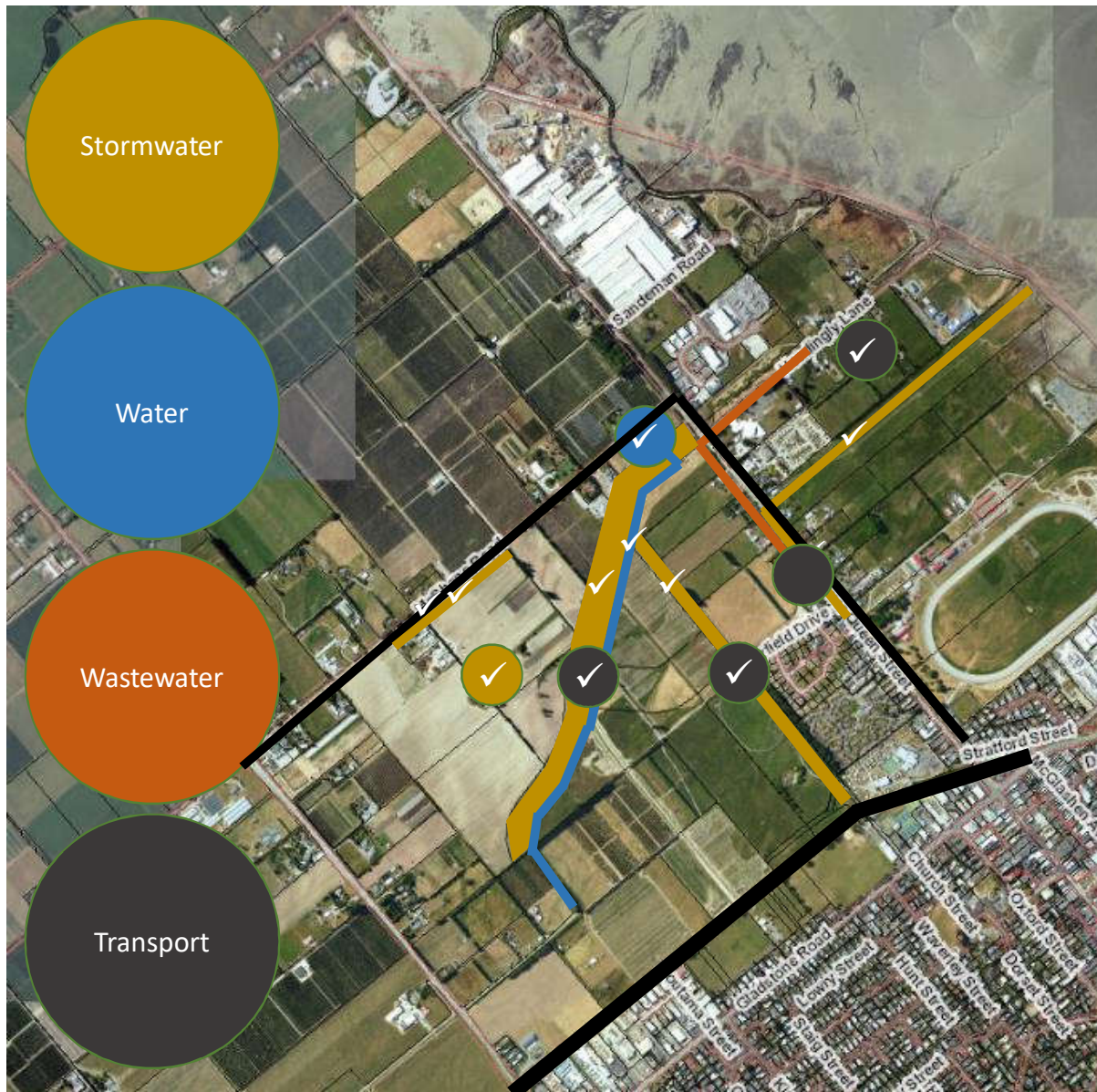
Arvida complex – artist's impression

Arvida



Making Tasman Great

Richmond West - Projects



"Making Tasman Great"

Upgrade to Richmond Water Treatment Plant



New balance tank

Making Tasman Great

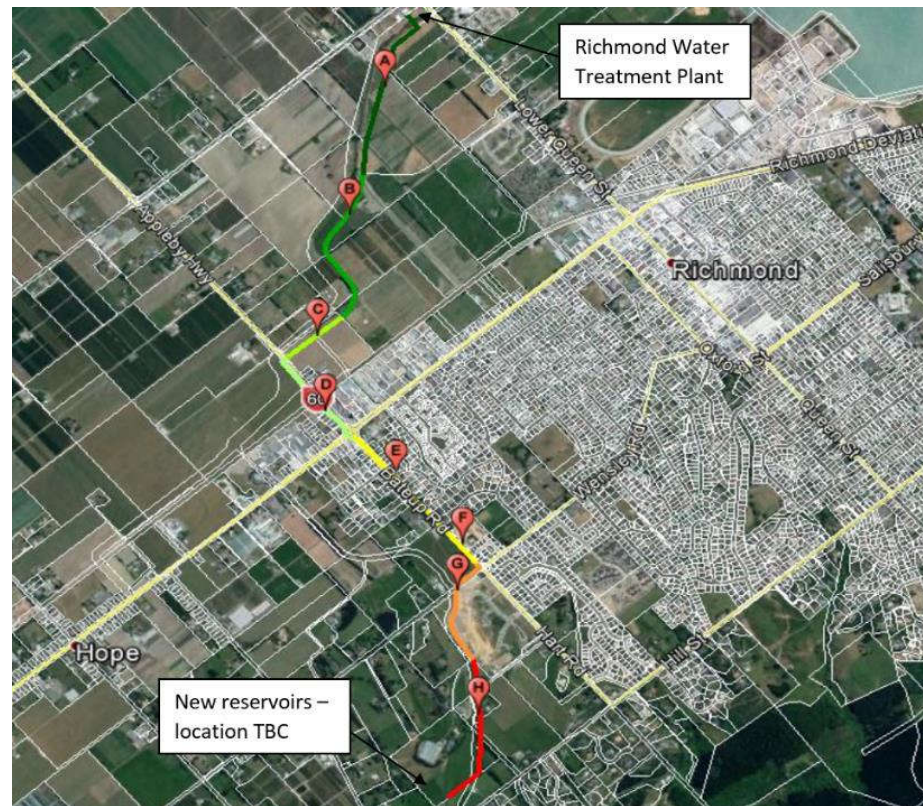
Upgrade to Richmond Water Treatment Plant



New headworks for Richmond West and South Trunk Main

Making Tasman Great

Richmond West and South Trunk Main



Staging plan for pipe installation

Richmond West and South Trunk Main



375mm dia trunk main crossing under Borck Creek

Making Tasman Great

Lower Queen Street Stormwater

- From Berryfield Drive to estuary via 428 Lower Queen Street
- Three contracts – 2 x civil, 1 x earthworks
- Partnership with Coman Developments Ltd
- 1km of pipeline and open channel
- 900mm to 1350mm pipeline plus 2x1m box culverts
- \$4.5m project budget
- Completed October 2018
- 20ha land served by new network

428 Lower Queen Street / Comans



Making Tasman Great

428 Lower Queen Street / Comans



428 Lower Queen Street / Comans



Making Tasman Great

Borck Creek and Poutama Stream

- Three main developers
- Partnership work to allow fill extraction and achieve final channel stream design
- Potential to enable work scheduled for 2023/24 to happen sooner
- Partnership and cost share to construct Berryfield Bridge over Poutama Drain

Richmond West



Making Tasman Great

Poutama Bridge



Making Tasman Great